

Model: MET-MF3 Color Controller E-25C		Date: 21-Jan-19	No.: RD3GF001
Subject: Important notes on installing the Color Controller E-25C		Prepared by: C.Tsuji	
From: Sales Strategy Section, 1st CP Business Dep.			
Classification:	<input type="checkbox"/> Troubleshooting	<input type="checkbox"/> Part information	<input checked="" type="checkbox"/> Action required
	<input type="checkbox"/> Mechanical	<input type="checkbox"/> Electrical	<input type="checkbox"/> Service manual revision
	<input type="checkbox"/> Paper path	<input type="checkbox"/> Transmit/receive	<input type="checkbox"/> Retrofit information
	<input type="checkbox"/> Product Safety	<input type="checkbox"/> Other (information)	<input type="checkbox"/> Tier 2 <input type="checkbox"/> Tier 0.5

This Technical Bulletin contains important notes on installation of the Color Controller E-25C for Model Met-MF3 a/b/c/d/e.

Approved Firmware for Model Met-MF3 connected with the E-25C Controller

Make sure to upgrade the firmware modules for Model Met-MF3 to the following versions or newer when installing the E-25C.

- Package (ALL) Ver.1.1 D0BN5592A or newer.

SP settings for the E-23C Controller

As described in the service manual, change the following four SP values in Model Met-MF3 when installing the E-25C.

SP#: 5193-001

Value: **1** (Default: 0)

* The valid external controller will be specified as "Fiery controller".

SP#: 5895-001

Value: **1** (Default: 0)

* This setting disables the pre-installed GW printer features.

GW printer features must be disabled to use the E-25C.

SP#: 4201-003

SP#: 4201-004

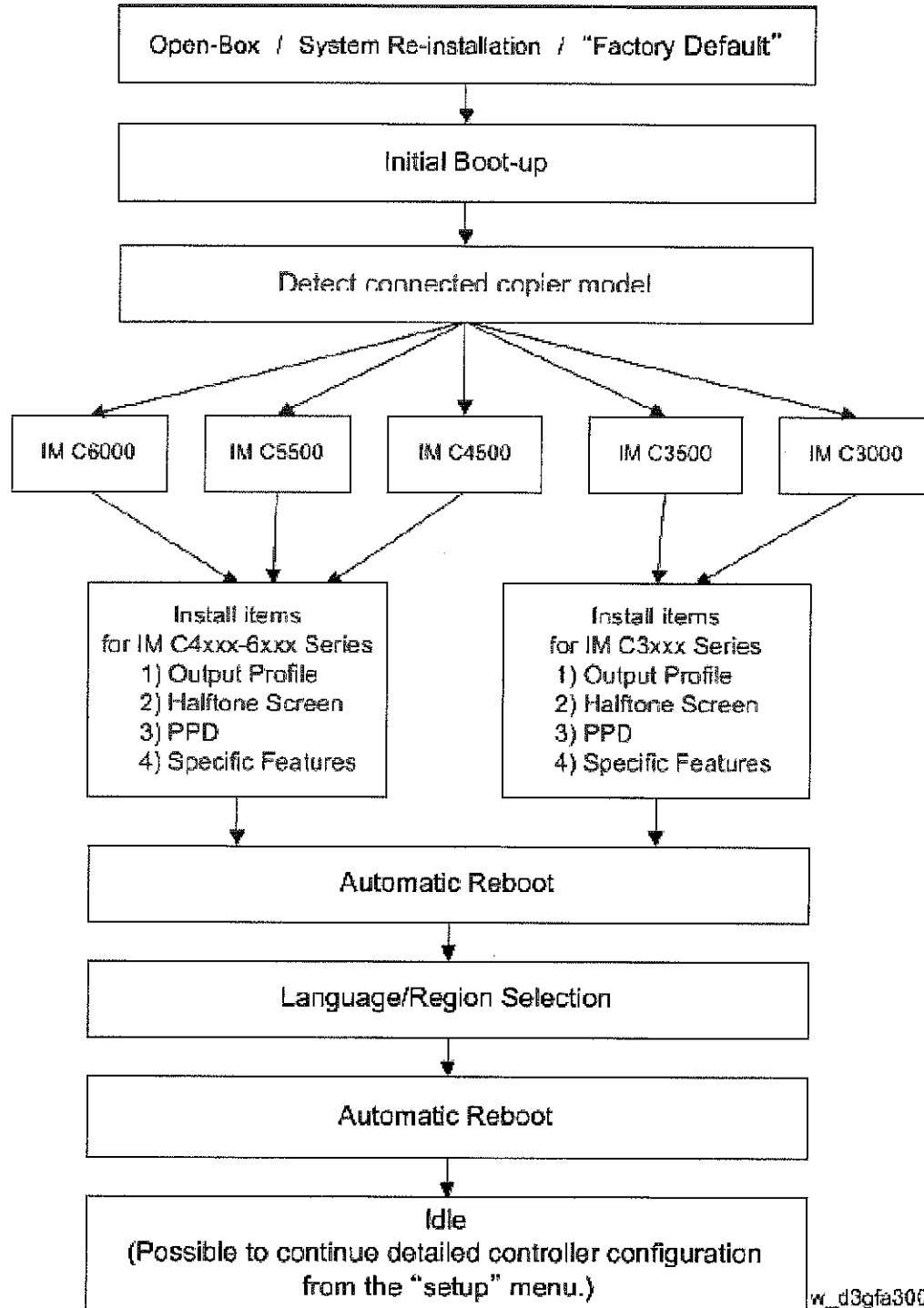
Values: **15** (Default: 11)

* These settings will optimize the engine print parameters for E-25C.

Note: All of the above modified SP values will be cleared and set back to the default value "0" if the "Erase All Memory" function is executed.

Important notes on E-25C installation

Once you install and connect the E-25C with the copier (IM C3000 / IM C3500 / IM C4500 / IM C5500 /IM C6000), E-25C will be configured as follows during the initial boot-up.



Model: MET-MF3 Color Controller E-25C

Date: 21-Jan-19

No.: RD3GF001

Compatibility table

Copier to be used with E-25C	IM C6000	IM C5500	IM C4500	IM C3500	IM C3000
Copier connected during the initial boot-up of E-25C					
IM C6000	S	S	S	NS	NS
IM C5500	S	S	S	NS	NS
IM C4500	S	S	S	NS	NS
IM C3500	NS	NS	NS	S	S
IM C3000	NS	NS	NS	S	S

S: Supported

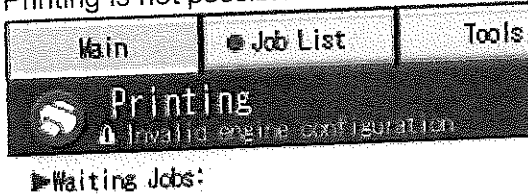
NS: Not Supported. Execute "Factory Default" to support the copier.

Refer to the above compatibility table, if you plan to pre-install and pre-configure the E-25C before customer site installation, or if the copier model in use with the E-25C is to be changed.

Refer to the above compatibility table, if you plan to pre-install and pre-configure the E-25C before customer site installation, or if the copier model in use with the E-25C is to be changed.

For example, if the copier in use by the customer is C5500, E-25C needs to be pre-installed and preconfigured with C5500 or C6000 or C4500.

If the configured E-25C is connected to an incompatible copier model (= NS in the above table) at a later time, "Invalid engine configuration" error appears on the operation panel as shown below. Printing is not possible at this state.



d3bna0010

To enable printing, re-configure the E-25C with the copier in use, execute the "Factory Default" (Restoring the E-25C to Factory Defaults) and follow the installation procedure once again.

How to Identify the Copier Model Initially Connected with the E-25C

Check the Output Profile name in the printed PS Test Page, Command WorkStation, etc.

Server
Fairy E809

Printer
IM C6000 C5500 C4500 E-25C V1 D PS

Output Profile
Fairy IM C4500-C6000 Normal v1F

CMYK Source Profile
PSD Coated FOGRA51 (EP)

CMYK Processing Method
Full (Output GCR)

Separate RGB/Lab to CMYK source
Off

Model: MET-MF3 Color Controller E-25C

Date: 21-Jan-19

No.: RD3GF001

Copier connected during the initial boot-up of E-23C	Output Profile Name
IM C6000/IM C5500/IM C4500	Fiery IM C4500-C6000 Normal v1F
IM C3500/IM C3000	Fiery IM C3000-C3500 Normal v1F